

BOQ FOR INTERIOR FURNITURE WORK OF MAIN BRANCH OF CENTRAL BANK OF INDIA, NAGPUR

S.No.	Item	Unit	Qty.	Rate	Amount
1	Providing and Fixing Main Frame Suspended ceiling consisting of fixing company made GI channels of 27mm X 0.5 mm thick having one flange of 20mm and another flange of 30mm along with perimeter of the ceiling. Frame should be properly anchored to the MS frame. The suspending GI intermediate channels of size 45mm x 0.55 mm thick with two flanges of each from the soffit @1200 mm centers with GI hangers of 25mm x 0.5mm thick fixed to soffit with GI cleat and steel expansion Anchor fasteners and to intermediate channel with GI nut and bolt. Ceiling section of 0.5mm thickness having knurled wedge of 51.5 mm and flanges of 26mm each with clips of 10.5mm fixed to the int. channels with help of connecting clips in perpendicular direction to the intermediate channels at 450mm center, 12.5mm thick Gypsum board is to be fixed with 25mm screws maintaining proper distance. Surface to be finished with tape and plaster. Cost to include the cutout provision for AC Grille, Light Fittings and any other gadgets as per requirement. 3 coats of Plastic emulsion paint. Complete.	Sq.m.	55		
2	Providing and erecting false ceiling of Mineral Fiber ceiling Board Armstrong with clip on type panels with framework, runners, suspenders from the existing ceiling as per the manufacturers details and specification including fine fissured tiles complete including making cut-outs for electrical fixtures, AC diffusers, access etc complete as per the instructions of the bank. Rate quoted should also holds good to carryout the composite type of false ceilings with gypsum materials by lowering the boards for housing of AC ducts. tile size 595x595x16mm, RH 99 DUNEI T 15 sillhoute grid with black reveal grid. Complete	Sq.m.	204		
3	Providing and fixing in position partly glazed & partly panelled partition made of 50 mm x 50mm x 1.2mm medium duty aluminium hollow square pipes framed at 0.60 m. to 0.45 m c/c both ways covered with 8 mm BWR grade ply and 1mm multi-colour laminate of approved shade and make with 10 mm thick glass panel with etching as per design and / or necessary beading patti including 3 coats of french polishing including all necessary fittings etc. complete.	Sq.m.	94.5		
4	Providing & fixing of Solid partition made of 50 mm x 50mm x 1.2mm medium duty aluminium hollow square pipes framed at 0.60 m. to 0.45 m c/c both ways covered with 8 mm BWR grade ply and 1mm multi-colour laminate of approved shade and make 8 as per design and / or necessary beading patti including 3 coats of french polishing including all necessary fittings & fastners etc. complete.	Sq.m.	32.45		



S.No.	Item	Unit	Qty.	Rate	Amount
5	Providing & fixing of Low ht. partition made of 50 x 50 x 1.2mm medium duty aluminium hollow square pipes framed at 0.6 m to 0.45 m c/c both ways covered with 8 mm MR grade ply and 1mm thick laminate of approved shade & make, both sides including necessary opening / outing for receiving cheques & other papers, and to receive 12 mm th. Float glass including all necessary opening for electric / telephonic conduits etc. as per requirement.	Sq.m.	21		
6	Providing & fixing of 12 mm thk. Glass with etching as per design for partitions fixed with TW beading as per directed. All exposed glass edges with rounded moulding and crystal polish. All exposed woodwork to be finished in 3 coats of French polish/ melamine	Sq.m.	9		
7	Providing & fixing of Partially Glazed doors in single leaf 35 mm thick, finished with approved 1mm th. Laminate on both faces with / without glazing and venetians in the positions shown on the drawings or as directed, all necessary beads, moulding and lipping, Stainless Steel fixtures and fastenings with CP / brass mortise lock, Stainless Steel handles on both sides, stoppers and exposed woodwork finished with French-polish complete.	Sq.m.	7.5		
8	Providing & fixing of Partially solid doors in single/double leaf 35 mm thick, finished with approved 1mm th. Laminate on both faces with / without glazing and venetians in the positions shown on the drawings or as directed, all necessary beads, moulding and lipping, Stainless Steel fixtures and fastenings with CP / brass mortise lock, Stainless Steel handles on both sides, stoppers and exposed woodwork finished with French-polish complete.	Sq.m.	7.5		



S.No.	Item	Unit	Qty.	Rate	Amount
9	Providing & fixing of Cash counter as per std. drawing with necessary drawer unit etc. complete Providing & fixing cashier's counter of 4'9" height and 2'6" width with 12mm thick glass from 3' height in front elevation fixed with necessary brass studs. Counter to be made up of 18mm. thk. Plywood framework and open space for C.P.U. & drawer above it on other side of Key Board drawer of ebco make. The counter should have necessary holes of required sizes for wire managers. The glass above service counter to have 5 inch dia hole. The counter should have necessary passages & ledges for data cables, electrical cables and telephone lines. The counter should be finished with 1.0mm. Thk. Laminate of approved color & shade from external side and 0.8 mm. thk. white Laminate of on internal surface. All the exposed edges of plywood including lower edges should have lipping patti. Lipping patti should be finished in polish. The cost should include necessary hardware Moulding, handles & Godrej make drawer locks with common key for cash drawers, footrest etc. complete as per design.	Nos.	2		
10	Providing & fixing Tables of 2'5" height to be made up of 18mm. thk. Plywood framework and open space for C.P.U. & Drawer, shutter arrangement on other side of Key Board drawer. The table should have necessary holes of required sizes for wire managers. The counter should have necessary passages & ledges for data cables, electrical cables and telephone lines. The counter should be finished with 1.0mm. Thk. Laminate of approved color & shade from external side and 0.8 mm thk. laminate from inside. All the exposed edges of plywood including lower edges should have lipping patti. Lipping patti should be finished in polish. The cost should include necessary hardware Moulding, handles & Godrej make drawer locks etc. complete as per design.				
a	Size 1520 x 750	Nos.	5		
b	Size 1830 x 750	Nos.	9		
c	Size 2100 x 850	Nos.	1		
d	Size 1350 x 650	Nos.	1		



S.No.	Item	Unit	Qty.	Rate	Amount
11	Providing & fixing Tables (For Server) of 2'5" height and 2' width to be made up of 18mm. thk. Plywood framework and open space for C.P.U. & Drawer, shutter arrangement on other side of Key Board tray. The table should have necessary holes of required sizes for wire managers. The counter should have necessary passages & ledges for data cables, electrical cables and telephone lines. The counter should be finished with 1.0mm. Thk. Laminate of approved color & shade from external side and 0.8 mm thk. laminate from inside. All the exposed edges of plywood including lower edges should have lipping patti. Lipping patti should be finished in polish. The cost should include necessary hardware Moulding, handles & Godrej make drawer locks etc. complete as per design.	Rmt.	0		
12	Providing & fixing side unit made up of 18mm. thk. plywood framework & 8mm. thk. plywood as backing. Side unit should have 2/3 no. of drawers above & shutters below. Drawers should be made up of 18 thk. Plywood fascia, 12 thk. Plywood sides & 6 thk. Plywood bottom. Drawers should be mounted on heavy duty drawer sliders. Side unit should be finished with 1.0 mm. thk. Laminate of approved shade & colour on external surface & 0.8 mm. thk. white Laminate of on internal surfac. All exposed edges of 18 thk. & 12 thk. Plywood should have lipping patti All lipping patti's should be finished with polish on it. The cost should include necessary hardware, handles, Godrej make locks etc. complete as per design.				
a	Size 1200 x 750	Nos.	1		
b	Size 1100 x 750	Nos.	6		
13	Providing & fixing file storage unit made up of 18mm. thk. plywood framework & 8mm. thk. plywood as backing. storage should have above & below shutters. Unit should be finished with 1.0 mm. thk. Laminate of approved shade & colour on external surface & 0.8 mm. thk. white Laminate of on internal surface. All exposed edges of 18 thk. & 12 thk. Plywood should have lipping patti All lipping patti's should be finished with wood polish on it. The cost should include necessary hardware, handles, Godrej make locks etc. complete as per design.				
a	Low Ht. Storage	Sq.m.	12.5		
b	Full Ht. Storage	Sq.m.	35		
14a	Providing & fixing wall paneling made up of 12 mm plywood & 1 mm laminate in multicolour. 18 gauge 50x50 mm Aluminium section framework at 600 mm c/c both ways (or as directed by the Architect); Paneling should be finished with specified finish as per design. All provisions to be made for all electrical, networking, telephone etc. boxes onto framework at required heights/levels with necessary additional supports &/or scaffolding as required.	Sq.m.	114.5		



S.No.	Item	Unit	Qty.	Rate	Amount
14b	Providing & fixing paneling over existing partition made up of 6 mm plywood & 1 mm laminate in multicolour. Paneling should be finished with specified finish as per design. All provisions to be made for all electrical, networking, telephone etc. boxes onto framework at required heights/levels with necessary additional supports &/or scaffolding as required.	Sq.m.	38		
15	Providing & fixing writing desk made up of 18 thk. Double plywood supports as shown in the drawing. Plywood supports shall be finished in laminate on it. The frame shall have 6mm thk. Plywood back & it should be finished with laminate. 12 thk. Glass shall be fitted with D-brackets on partition & rubber vacuums on plywood supports. The writing desk will be of hanging type as shown in the drawing. The desk should be fitted on D-brackets. The writing desk will be of hanging type as shown in the drawing.	Nos.	2		
16	Providing & fixing of Vertical Blinds of approved makes	Sq.m.	45		
17	Providing & fixing main door made up of 12 mm thk. Clear toughened glass shall be fixed on Ozone make patch fitting with necessary hardware with application of sealant from all sides. Edge polish for all exposed sides of glass. Complete as per design Door size 7'0" x 3'3" with necessary hardware like floor spring, 12" S.S. finished decorative handle pair, & locking arrangement. Edge polish for all exposed sides of glass. Complete as per design	Sq.m.	6		
18	Providing & fixing of 12 mm thk. Toughened glass partition shall be fixed on Ozone make patch fitting with necessary hardware with application of sealant from all sides. Edge polish for all exposed sides of glass. Complete as per design	Sq.m.	12		
19	Providing and applying acrylic emulsion paint of approved quality, shade and colour in 2 or more coats to achieve desired result including applying one coat of primer of cement paint, preparing the surface by cleaning the dust/dirt by watering/brushing the surfaces, filling in cracks/crevices, scaffolding at all levels, necessary lead, lifts etc. complete Rate including Wall Punning : Gypsum wall punning to all internal walls scrapping and making tacchha by gridding machine and levelling it with gypsum finish, everything in plumb finish, all electrical conduits to be filled and finished etc. complete	Sq.m.	375		
20	Prepare surface and applying two coats of Synthetic Enamel paint of approved colour and shade over a coat of anti corrosive paint after thoroughly scrapping the existing paint	Sq.m.	150		
	TOTAL				



Appendure - C

BID-ELECTRICAL WORKS OF CENTRAL BANK OF INDIA MAIN BRANCH BANGALURU

No.	PARTICULARS	QTY.	UNIT	RATE	AMOUNT
SECTION - A					
1	LIGHT POINT WIRING Supplying, Installation, Testing & Commissioning of Light Point Wiring using 1180 Vvts grade with 3 Nos. of 2.5 Sq.mm. Copper PVC Insulated FRLS (flame retardant low smoke) through PVC conduits of 25mm. of 16 Gauge thickness. All the wiring below false ceiling or wall must be concealed. All the drops wire from the junction box to the light point must be in flexible pipe with gland at the junction box. (Make - KOT / NIS / Polycab - PMS) Rate quoted must include the cost of circuit wiring from DB Switchboard & switchboard to switchboard, switches, Conduit Box, Plate and Required Accessories etc. (Make as per lot)				
1a	1 Light control by 1 switch	06	NOS		
1b	2 Light control by 1 switch	5	NOS		
1c	3 Light control by 1 switch	1	NOS		
1d	Glow sign board wiring with 16mm inch termination	1	NOS		
1e	Wall Socket Point on Lighting Board	10	NOS		
1f	Bell Point With Indicator Type Bell instrument	2	NOS		
1g	Exhaust Fan Point	1	NOS		
1h	Ceiling Fan Point With Fan Point, 220V single type Fan Regulator etc.	17	NOS		
1i	POWER POINTS wiring for 5/16 Amp 6-pin sockets by using 4sq.mm PVC Insulated 1180V grade copper conductor wire with independent 2.5 sq.mm earth wire from DB to first and being of 16amp. 6-pin socket with 16amp. Switch	15	Nos		
1k	A.C. point wiring with 2 X 4 sq. mm copper conductor & 2 X 2.5sq. mm copper conductor from AC DB to AC point in 16 mm PVC conduit (1TR & 1 ETR AC)	8	Nos		
1l	A.C. point wiring with 2 X 6 sq. mm copper conductor & 2 X 4 sq. mm copper conductor from AC DB to AC point in 16 mm PVC conduit (1TR & 1 ETR AC)	5	Nos		
TOTAL OF SECTION A					
SECTION - B					
1	RAW POWER POINT Supplying, Installation, Testing & Commissioning of raw power socket point on Skirting, Walls, for tables using heavy duty PVC pipe run concealed within Walls / Partition / Work Station etc. The rate shall be inclusive of MS concealed box, switch, socket, surface plate per pipe from junction to point. Rate quoted must include the cost of circuit wiring by using 3 X 2.5 sq.mm. Copper conductor PVC FRLS. wires from DB Switchboard & switchboard to switchboard (Make as per lot)				
1a	6 Amps 3 Pin or 5 Pin socket and 6 Amps Switch Point	20	NOS		
1	COMPUTER SOCKET POINT Supplying, Installation, Testing & Commissioning of computer socket point on Skirting, Walls for for tables using PVC pipe run concealed within Walls / Partition / Work Station etc. The rate shall be inclusive of MS concealed box, switch, socket, surface plate per pipe from junction to point. (Make - MDS / MK / North West) Rate quoted must include the cost of circuit wiring from DB Switchboard & switchboard to switchboard with 3 Nos. X 2.5 sq.mm. PVC Insulated Copper flexible cable in 25/32mm per pipe with suitable size PVC Glands for Termination for 3 Nos. of 6 Amps below work station on 8 module plate & 1 No. of 16 Amps SP switch with indicator above work station.	20	NOS		
2b	1 No. of 6/16 Amps socket with 1 No. of 16 Amps SP indicator switch above work station.	20	NOS		
TOTAL OF SECTION B					
SECTION - C					
1a	Supply, Installation, connection of 380V 200Amp with HRC Fuse unit 3 nos with 200 Amp neutral link on MS Angal frame etc. complete.	1	Set		
2	ELECTRICAL PANEL Design, manufacture, providing, storing & installing in position, effecting proper connection, testing and commissioning of panel made of 14 BWL CRCA sheet steel. It shall be dust and vermin proof. It shall have compartmentalized construction with bus bar chambers, cable tray, cable glands plate etc. as required. duly painted from inside as well as outside. It shall have the following: Incomer : 1 No. 200 Amp. TPN MCCB (16 KA breaking capacity), Busbars : 300 Amps, 3 phase, 4 strips, 415 volts, 50-Hz. copper busbars with cadmium coated PVC heat shrinkable sleeves, Instruments. Main function Meter: for Voltage, Ampere, Power factor, kWh, Data 1 No. with CF 75/5 Outgoing: 2 Nos. 125 Amp 25 KA TPN MCCB 2 Nos. 63 Amp 25KA TPN MCCB 4 Nos. 40/63 Amp 10KA TPN MCCB 4 Nos. 10 / 16/32 Amp 10KA SP MCCB (for Glow sign board and Storage Room Lighting, space heater) The design of panel should be got approved by the Architect before manufacturing. The job shall be completed, to the satisfaction of the Bank Engineer/Architect.	1	set		
3	Supply and installation of 20 KVAB APFC panel, floor/wall mounted front operated totally enclosed vacuum proof, indoor non-drawout-cubicle type power panel fabricated out of 2mm CRCA sheet having gasketed hinged cover on each cubicle fully powder coated with following accessories: a. 1No. 125A, 1P, MCCB as Incomer b. 2 Nos. 25A 3P contactor c. 2 Nos. 25A MCB d. 1No. 20 KVAB, 100, 10 KVAB 100-140A, 1No. 5 KVAB 250-280A Capacitor e. Suitable bus bar for connecting the contactors and MCCBs, Capacitors f. 1 mm 6 strip APFC relay suitable for above arrangement g. ON/OFF/TRIP push button for each capacitor h. ON/OFF/TRIP indication lamp for each capacitor i. 1 Set. kWh, indicating lamps with meters and fuses for metering.	1	Set		
4.0	5/17/Commissioning & test TTPN DB System	2	NOS		
4	Trimming 10A 1P MCCB 1 NOS				



b	Outgoing: 100A 3P MCB 5 NOs with all accessories 100/32/20 A SP MCB 2 NOs with all accessories Separate Neutral Bus for each Phase to be given			
5	LIGHTING, GUN RAW POWER DISTRIBUTION BOARD ETPN DB consist of			
a	Incoming: 40/32 Amps TPN MCB - 1 No. 40A, 100mA, 2 Pole RCCB per phase			
b	Outgoing: 1P / 16Amps SP MCB 5-circuit - 12 Nos. (Make - L&T Legrand / Siemens / Merlin Gerin)	1	SET	
5	UPS/INVERTER, POWER DISTRIBUTION BOARD 12 WAY SPN UPS DB consist of			
a	Incoming: 40/32 Amps DP MCB - 1 No.			
b	Outgoing: 1P/16 Amps SP MCB, Triacitor: 10 Nos. (Make - L&T Legrand / Siemens / Merlin Gerin)	2	SET	
5	UPS/INVERTER, DISTRIBUTION BOARD 8 WAY SPN UPS DB consist of			
a	Incoming: 40/32 Amps DP MCB - 1 No.			
b	Outgoing: 1P/16 Amps DP MCB, Triacitor: 8 Nos. (Make - L&T Legrand / Siemens / Merlin Gerin)	2	SET	
6	UPS/INVERTER 6 Way TPN DB (for Line/Inverter/Master DB)	1	SET	
a	Incoming: 40/32 Amps DP MCB - 1 No. Outgoing: 40/32 Amps DP MCB - 2 Nos.			
b	ITTC of 63/40 Amp TP 10KA MCB in Metalic enclosure for Branch UPS and inverter in put must supply complete in all respect as required.	1	NOS	
c	ITTC of 32 Amp TP 10KA MCB in Metalic enclosure for ATM UPS in put power supply complete in all respect as required.	1	NOS	
d	ITTC of 40/32 AMP industrial socket along with DPNCB for branch UPS & Inverter output power supply complete in all respect as required.	2	NOS	
7	Signature Timer 5/1/T/Commissioning of Automatic Timer control for Signages with Automatic Power On / Off to sign board with required capacity of Automatic 24 Hrs Timer Delay operation designed for cyclic mode as per IS standard etc. complete (Basic Cost Not Less Than Rs 2500/- Only) (L&T make)	1	NOS	
8	AC Cycle Timer Supply, Installation & Commissioning of Automatic AC Cycle for 2 nos. of Light/ Window ACs with 1 no. of Real Time Electronic Timer Switch SWG2150LX of M8 & 2 nos. Contactor / High Power Relay, Watts ON & AC-1 & AC-2 indicating LED type Lamps, 20 HRC fuse with fuse for contactor coil & 1 no. 32A DP MCB with Auto/ Manual Switch, in Powder coated MS Box & all accessories with 08nos make terminals for outgoing/ incoming connections	1	NOS	
TOTAL OF SECTION C				
SECTION - D				
1	POWER CABLE & TERMINATION			
a	Supplying, Installation, Testing & Commissioning of LT Cable rated for 1100 Volts AC as per IS Standard with necessary accessories with fine resistance cable. Rates are inclusive of LT Cable Termination of CU/AL with respective following size cable (Make - Sumitomo / Siemens) (Make - PVCables PE / Polyeth Insulated)			
1	3.5 Core X 120 Sq.mm. Aluminum Armoured cable from TRF to Main panel with 0 mwg GI wires for earthing	10	MTR	
2	3.5 Core X 70 Sq.mm. Aluminum Armoured cable with 0 mwg GI wires for earthing From Main Panel To RD & Branch Panel	65	MTR	
3	4 Core X 16 Sq.mm. Cu. Armoured XLPE Cable for AC DB (ETPN) & APFC Panel	45	MTR	
4	4 Core X 16 Sq.mm. Cu. Armoured XLPE Cable for RD UPS & Branch UPS	25	MTR	
5	4 Core X 6 Sq.mm. Cu. Armoured XLPE Cable for Light DB (YTPN)	70	MTR	
6	4 Core X 6 Sq.mm. Cu. Armoured XLPE Cable for ETPN DB (Power)	70	MTR	
7	3 Core X 4 Sq.mm. Cu. Armoured XLPE Cable for All SPN DBs	125	MTR	
8	3 Nos. X 10 Sq.mm. PVC insulated Copper flexible cable in 25mm per Flexible pipe with suitable size PVC Glends for Termination	10	MTR	
9	1 Nos. X 2.5 Sq.mm. PVC insulated Copper Armoured cable for Out door Light & Gen Light	50	MTR	
TOTAL OF SECTION D				
SECTION - E				
1	FLOOR RACKWAYS / CONDUITS Supplying, Installation, Testing & Commissioning of following rackways / conduits manufactured as per specs given below in Bidding. The rate shall be inclusive of removing the flooring by cutter & back filling the same with required Sand, Cement, etc. and giving the finishing upto the floor level as per instructions of Architect/Struct engineer / Consultant.			
1a	60mm X 40mm X 2mm Aluminum Rackways	70	MTR	
1b	25mm PVC Conduit Rackways	125	MTR	
2	FLOOR JUNCTION BOX Supplying, Installation, Testing & Commissioning of following GI Junction Boxes in floor of 16 SWG thick duty powder coated. The rate shall be inclusive of providing Sand, Cement etc. and finishing the same upto the floor level as per instructions of the Architect/Struct engineer / Consultant.			
2a	150mm X 150mm X 50mm, 16 SWG Junction Box with Stainless Steel Cover Plate	10	NOS	
2b	250mm X 100mm X 50mm, 16 SWG Junction Box with Stainless Steel Cover Plate	5	NOS	
2c	100mm X 100mm X 40mm, 16 SWG Junction Box with Stainless Steel Cover Plate	2	NOS	
TOTAL OF SECTION E				
SECTION - F				
1	LIGHT FIXTURE			



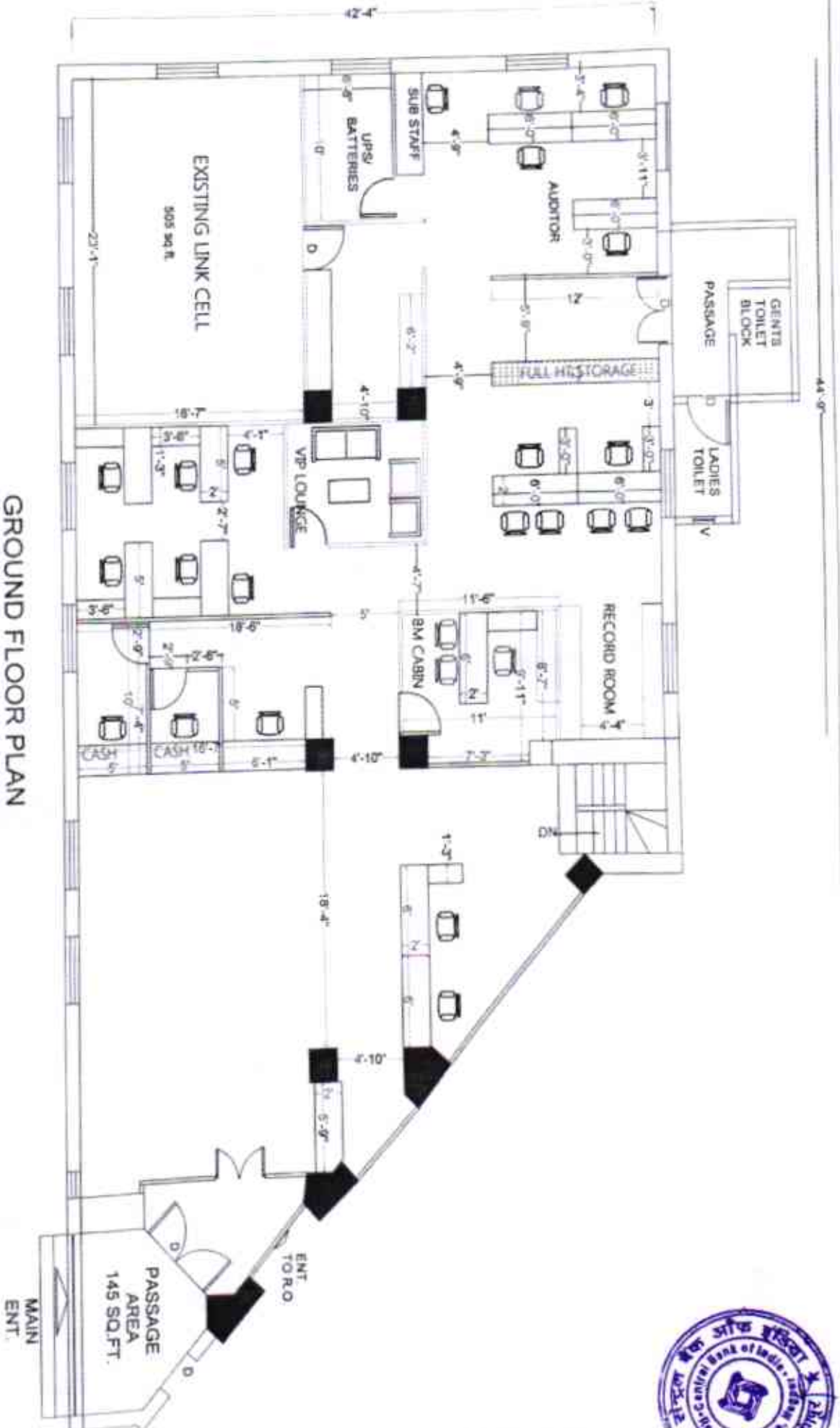
	Supplying, installation, Testing & Commissioning of following light fixtures complete of approved make as per specification with all fitting, accessories such as Junction Box, Hardware, Starter, Connector, Lamps, Tube etc. (Before installation Sample must be shown to Architect / Engineer)				
1a	2x2 LED FIXTURE suitable for recess mounting, Aluminum Body Milky Diffuser, Powder coated bottom frame with fitting depth of 35mm in ceiling with Heattrap & all accessories complete with in built Driver & all required accessories	20	NOS		
1b	15 watts led downlighter with Aluminum Die Cast body complete with in built driver & all required accessories	50	NOS		
1c	20W LED 4" Recess fitting Recessed plastic body, milky diffuser	2	NOS		
1d	40" Ceiling Fan of Royal/GS/Mandela/ Usha with Double ball bearing decorative type as directed by architect	17	NOS		
1e	Supply & fixing of 400mm wall fan as directed by architect	1	Nos		
1f	4" Exhaust Fan modular type with ball bearings of Unique / CEE / Gumpson make	1	NOS		
TOTAL OF SECTION F					
SECTION G					
MISCELLANEOUS WORK					
1	Supplying/Installation/Testing & Commissioning of Earthing station with 600 X 600 X 6mm thick GI plate as per IS rule. Rate shall be inclusive of supply installation of GI plate, 25mm dia GI pipe with funnel for water and 450mm Cast iron cover with its frame. Necessary digging of earth pit, excavation, back filling of earth, electrode, charcoal, salt layer & brick masonry work in proper manner. (The electrode should be buried not less than 4.5 Meters deep and resistance should be not less than 0.5 ohms.)	1	NOS		
2	Supplying/Installation/Testing & Commissioning of Earthing station with 600 X 600 X 6mm thick CO plate as per IS rule. Rate shall be inclusive of supply installation of 25mm dia GI pipe with funnel for water and 450mm Cast iron cover with its frame. Necessary digging of earth pit, excavation, back filling of earth, electrode, charcoal, salt layer & brick masonry work in proper manner. (The electrode should be buried not less than 4.5 Meters deep and resistance should be not less than 0.5 ohms.)	1	NOS		
3	S/S/T/Commissioning of 1 No. of 18 sq.mts. single core PVC flexible copper wire for UPS in 25mm PVC conduit with all required accessories etc.	10	Mtrs		
3a	S/S/T/Commissioning of 25mm X 3mm GI Earthing Strip	20	Mtrs		
4	Arranging temporary Power & Lighting for all agencies to work. The rate shall include statutory approval from Local Electrical Inspectorate & other required statutory bodies, preparation of AS 10137 drawings, Testing of the installation & preparation of test report as required by statutory bodies. Note: The rate is include cost of suitable temporary Lighting for all areas as per requirement during work.	1	Nos		
5	S/S/T/Commissioning of light sensors for ceiling /outletless rooms	1	Nos		
TOTAL OF SECTION G					
SUMMARY					
A	SECTION A				
B	SECTION B				
C	SECTION C				
D	SECTION D				
E	SECTION E				
F	SECTION F				
G	SECTION G				
TOTAL					



BILL OF QUANTITY & PRICE BID for CENTRAL BANK OF INDIA, Main Branch NAGPUR
Installation of Voltas Make Individual Air Conditioners

INSTALLATION OF INDOOR & OUTDOOR UNITS				
1.0	Four Way type Air Conditioners			
	Supply of individual split type high wall air conditioner standard size of nominal cooling capacity having BEE star rating of 5 star or above standards and specifications, suitable as per site requirement with swing louvers and adjustable blades from sides. Indoor Units complete with in-built drainage arrangements, fan, refrigerant liquid and refrigerant piping, cordless remote control, and fresh air port and front grill etc. 3-phase, 440V, 50Hz, AC input supply.			
1.1	Actual Capacity -2.0TR	4	Nos	
1.2	Actual Capacity -3.0TR	3	Nos	
2.0	Hiwall type Split Air conditioners			
	Supply of individual split type high wall air conditioner standard size of nominal cooling capacity having BEE star rating of 5 star or above standards and specifications, suitable as per site requirement with swing louvers and adjustable blades from sides. Indoor Units complete with in-built drainage arrangements, fan, refrigerant liquid and refrigerant piping, cordless remote control, and fresh air port and front grill etc. 1-phase, 230V, 50Hz, AC input supply.			
2.1	Actual Capacity -1.5TR	1	Nos	
2.2	Actual Capacity -1.0TR	1	Nos	
3.0	Supplying and fixing of following copper conductor cable for connections AC unit completed etc. as reqd			
3.1	4 core x2.5 sq.mm communcaton cable from indoor unit to outdoor unit.	180	RMT	
4.0	Supply, installation, testing and commissioning of refrigerant gas piping using eddy current free copper piping work with 9 mm thick insulation			
4.1	Copper Piping for Cassette AC 3TR	65	RMT	
4.2	Copper Piping for SPLIT & Cassette AC 1.0 TR, 1.5TR & 2.0 TR	90	RMT	
5	Supply, installation, testing and commissioning of condensate drain water piping with necessary clamps, supports, hangers such as bend, tees, reducers etc. duly insulated with 9 mm thick chemically cross-linked closed cell polyethylene foam.			
5.1	25 mm dia pipe with insulation	80	RMT	
5.2	32 mm dia pipe with insulation	60	RMT	
6	Readymade outdoor stand epoxy coated.			
6.1	Cassette AC 3TR	7	Nos	
6.2	SPLIT & Cassette AC 1.0 TR, 1.5TR & 2.0 TR	2	Nos	
7.0	Drain pump for Split hiwall Acs	2	Nos	
8	Civil Work	1	Lot	
SUB TOTAL WITHOUT TAX				
Taxes as actual				
SUB TOTAL WITH TAX				
TOTAL PROJECT COST WITH TAXES				
1	Final Bill Shall Be Adjusted on final measurement.			
2	Fabrication work will be in costumer scope.			
3	core cutting will be charged extra (If required)			





GROUND FLOOR PLAN

PROJECT CENTRAL BANK OF INDIA MAIN BRANCH 11C SQUARE, NAGPUR	PLAN REVISED FURNITURE LAYOUT WITH VIP LOUNGE (OPTION - 2)	CONSULTANT ARCHITECT VIDYA SINGH & ASSOCIATES TAKKARWADI, APTS. FIRST FLOOR, P.H. 16, W.C. ROAD, SHIVAJINAGAR, NAGPUR-46 CONTACT NO. 982870144	AREA STATEMENT BRANCH CARPET AREA LINK CELL AREA TOTAL CARPET AREA = 2238 SQ. FT. = 505 SQ. FT. = 2743 SQ. FT.	NORTH : PROJECT NO.: 287/CB/NM/NSA DATE: 24/07/2023 DRAWN BY: SANKU
---	---	--	--	--

MAIN
ENT.

② = Fan
 □ = 2 x 2 Panel, High
 O = 15w. D/N.



PROJECT :	PLAN :	CONSULTANT ARCHITECT :	AREA STATEMENT :	NORTH : 
CENTRAL BANK OF INDIA MAIN BRANCH LIC SQUARE, MADURAI	REVISED FURNITURE LAYOUT WITH VIP LOUNGE (OPTION - 2)	VIDYA SINGH & ASSOCIATES "OMAHARANTH" APTR. FIRST FLOOR, P.H. NO. W.C. ROAD, SHANMUGANAGAN, MADURAI-625 CONTRACT NO. 862378144	BRANCH CARPET AREA = 2238 SQ. FT. LINK CELL AREA = 505 SQ. FT. TOTAL CARPET AREA = 2743 SQ. FT.	PROJECT NO. : 387/256/MS/99A DWG. NO. : R-01 DATE : 25/07/2025 CON. BY : S.M.M.