

PRICE BID

CIVIL & INTERIOR WORK PART-I					
S.No.	Item/Description	Quantity	Unit	Rate	Amount
1	False ceiling Works : Note : i) Rate to be included for all kinds of profiles and cut outs required for light fixtures, Speakers, Smoke detector, trap doors and AC grill in the ceiling. Provision for light fittings, AC grills and diffusers have to be made at no extra cost supported with tees, Angles, etc. suitably fixed all complete as per drawing and direction. The area of these cutouts which is less than 0.5 sqmt for one unit will not be deducted while measuring the ceiling area. ii) The contractor must co-ordinate with electrical & AC contractor for working out various levels for the false ceiling & make the marking on the walls / columns before starting the false ceiling work. Measurement shall be taken of the plan area only. <u>No separate payment will be done for cove or vertical drops.</u>				
a	PLAIN GYPBOARD FALSE CEILING WITH PAINTING: Providing and fixing suspended false ceiling consisting of 12.5mm thick Gypsum board(India Gypsum, saint gobain, laffarge) suspended on GI framework. GI framework to consist of GI perimeter channels 0.55mm thick 20mm x 30mm along perimeter of false ceiling of ceiling, screw fixed to wall/partition with nylon sleeves and screws @ 600mm c/c. Suspending GI intermediate channels of size 0.9mm thick 45mm x 15mm from the soffit at max distance 1220mm c/c with ceiling angle 0.55mm thick 25mm x 10mm fixed to soffit using proprietary supplied GI cleats and steel expansion fasteners. Boards to be finished with proprietary supplied jointing tape and jointing compound and sand papered to achieve a smooth and seamless finish and <u>2 coats of primer alongwith coats of Acrylic paint suitable for Gypsum board</u> upto Bank's Satisfaction .Rate quoted to include vertical all cut-outs required for light fixtures, smoke detectors and other services cut-outs complete as directed by Architect.	210.00	Sqft.		
b	GRID FALSE CEILING /Modular False ceiling :Providing and fixing suspended false ceiling consisting : approved make MODULAR CEILING Tile: Classic Lite RH 95; Suspension system Suprafine 15 ()False ceiling will be measured on horizontal plane only. Horizontal plane measurements are to be inclusive of all vertical drops, edge mouldings, fascias, etc.Rate quoted to include all cut-outs required for light fixtures, smoke detectors and other services cut-outs complete as directed by Architect. Rate quoted to include cost of providing support framework formed of perimeter channels for fixing light fixtures, AC grills/diffusers etc. Also to provide concealed perimeter channel support as required to support modular grid ceiling sections at junction between gypboard false ceiling and modular grid tile ceiling.	1,000.00	Sqft.		

PRICE BID

2	Partition & Paneling works (only with commercial / MR grade Plywood, Brands – Century (sainik) / Greenply (ecotech). All woods to be treated with anti-termite coating (all sides).				
	Measurement of height shall be taken from finished floor level up to the level of false ceiling in case of full height partition. In case of low height the measurement of height shall be taken from FFL upto the beading top. In case of varying heights on either side of partition, average heights shall be considered. The rate to include provision of extra frame work as necessary for skirting and making cutouts for electrical switch plates, switch boxes, light fittings light etc, making provision for laying conduct as per drawings and directions of site Eng. / Architect. It also includes white cedar wood top beading on all sides as per the requirement of specified size as per the directions of Engineer. All wood frame work to be applied with 2 coats of fire retardant paint and 1 coat of wood preservative with anti-termite properties. The work also includes provision of door as per requirements along with all lock (Godrej) Handle, Hinges (5.5) stoppers, door closures etc. as per bank's architect instructions.				
a	Providing and fixing solid partition from floor level up to the level of false ceiling with frame work of aluminum with sections 1.75" x 1.75" at spacing not exceeding 600mm center to center in vertical direction. (Vertical member to be in one piece) and horizontal direction with 8 mm thick commercial plywood to be fixed on both sides, including grooves as per instructions and 1.0 mm thk laminate to be fixed (both sides) on top complete with polishing / painting the white cedar surfaces/beading with spirit polish as per design and to the satisfaction of Architect/Employer.	95.00	Sqft.		
b	Providing and fixing Glazed Partition with same specifications as (3a) item also includes 10mm Etched Glass above 900 mm to 1350/1800/2100 mm fixed in 75x15 mm white cedar wood member fixed around opening finished with melamine matt polishing. Rest of specifications same as MAIN specifications of Partitions. Complete to the satisfactions of Architect/ Bank.	85.00	Sqft.		
c	Providing and fixing Low height partition from floor level up to the 1220 mm with frame work of aluminium 1.75" x 1.75" at spacing not exceeding 600 center to center in vertical direction (Vertical member to be in one piece) and horizontal direction 8 mm Comm. ply to be fixed on both sides, including grooves as per instructions and 1.0mm thick laminate to be fixed on top. 15 mm white cedar molding on top and side edges of partition and including 12 mm etched glass above 900 mm in straight / taper or curved shape as detailed, complete with polishing/painting the grooves as per design and to the satisfaction on Architect / Bank.	143.00	Sqft.		
d	Providing and fixing wall paneling as per design & pattern with atleast 1.5"x 1" aluminum frame at 2'-0" c/c in both directions with 8 mm Comm. ply on top and finished with 1.0 mm laminate. The paneling to be screwed to the frame work; as per design and details. The wood surfaces to be finished in melamine polish complete. Top of the paneling edges / is to be provided with laminate or white cedar wood decorative beading of 35mm x 15 mm finished with polish/painting as directed.	60.00	Sqft.		

PRICE BID

e	Providing and fixing cash cabin partition from floor level up to the level of 2100 mm (approx.) with same specification as above at serial no. (a), (b) but with a 12 mm thick etched glass / tapered glass from 1067 up to 2100 fixed in white cedar wood beading of the size 35x15 mm over aluminum frame of size 10x25 screwed to the frame work: as per design and details. The wood surfaces to be finished in melamine polish complete. The item also includes cash cabin door with required hardware, accessories, door closure, handle, lock etc. which will be measured as partition.	100.00	Sqft.		
f	Providing and fixing 12mm ETCHED float glass in FRONT of CASH CABINS with metal clamps and all required accessories over existing partition including cutouts for passing currency as per details in item no. 3 (e). The edges of the glass to be polished complete with necessary cutting the holes in shape properly, grinding & polishing.	25.00	Sqft.		
g	FULL HEIGHT 12MM THK. TOUGHEN GLASS PARTITION: P/F 12 mm thick glass full height glass embedded in aluminum anodized sections all around for external facade glazing. Anodizing to be Natural Finish shade. (on special cases, subject to approval).(Frame work details as mentioned in item no. 1) The works includes fixing of glass with Top & Bottom surfaces with proper support/frame.	25.00	Sqft.		
h	ACP wall paneling: Providing & fixing in position Aluminum composite panel (ACP) with framing of Aluminum tube sections of min 1.5" x 1" and 20 gauge 2'0" c/c both ways. ACP to be in 2' width panels or distributed equally. Panels to be fixed to the frame with 3M or equivalent adhesive and with mirror screws. Joints to be finished with silicon based sealant. ACP thickness of 3 mm minimum. Aluminum foil thickness to be min 0.20mm on both sides. Alubond, Eurobond, Fujibond, Alcobond or equivalent ISO certified or approved brand to be used. Bright silver Shade to be as per bank's architect approval. Additional sections to be provided wherever necessary to fix the Indoor AC units as per site requirements. Both the AC units to be installed near the machine area at the highest position.	240.00	Sqft.		
3	Doors				
a	Providing and fixing of toughened glass doors (min. 12mm) with below fixtures of size 900x 2100 mm (approx.) Door hardware: (Ozone/ dorma/ dorset)	2.00	Nos		
	Door Lock (Ozone/ dorma/ dorset)				
	Door stopper				
	Floor Machine (Ozone/ dorma/ dorset)				
	Parch fitting				
	S.S. Handle 12" long (both sides)				

PRICE BID

b	Providing and fixing (FLUSH DOOR) –Providing and fixing single leaf solid core flush door (greenply/century) 35 mm thick factory made, finished on both sides with 1.0mm thick laminate of approved shade as indicated in drawing. Shutter to be lipped on all sides with 12mm thick teak wood beading. Applicable hardware to be considered for following doors according to requirement as per detailed drawings including below mentioned hardware-Door closer, SS Ball bearing Hinges ,SS foot operated Door stopper, SS Mortise Latch Lock / concealed dead lock, SS Mortise Handle. All material is of approved brand. Approximate size of door 750 x2100.	1.00	Nos		
c	Single skin Aluminum door for ATM ; - Providing and fixing anodized Aluminum door (shade to be approved by Bank) comprising of approximate 83.5mm vertical members, approximate 85- 90mm top & bottom, approximately 83.5mm middle member, Thickness of section not less than 1.5mm. Ozone/Hardwyn/Dorset/dorma floor spring (for 100 kg weight and rated for min 0.3 million cycles) and Pivot on top. 6mm clear glass with scratch free film on both sides. Suitable rubber beading. Wool pile/ weather strip on one vertical member. Providing and fixing color customized door handle 18” long to fit on aluminum section. The approx. door size is 3’6” x 7’	1.00	Nos		
d	Partition for ATM: Providing and fixing anodized Aluminum (shade to be approved by Bank) panel open able/ fixed comprising of approximate 83.5mm vertical members, appropriate top & bottom and middle members. Thickness of section not less than 1.5mm. 12mm clear float glass (Modi/ Saint Gobain) to be used. The door (specs given above) in all cases will always be 3’-6” x 7’. Depending on the width of the façade, one or two panels may be made. One panel will work as an emergency door with minimum width of 2’ on the side of the floor spring to be openable with 4 Nos. of 3” stainless steel hinges one edge and tower bolt on the top and bottom on the other edge.	20.00	Sqft.		
e	Flap door: P/F 4' x 3' matching 19mm laminated plyboard flap door.	1.00	nos		
4	Miscellaneous				
a	ACP Shutter Box: Rolling shutter boxing made up in ACP with required frameworks with all accessories as per Architects approval. Measurement to be considered for elevation front and sides only.	45.00	Sqft.		
b	ELECTRICAL CABINET: Providing and fixing the 1'-6" deep storage units. The storage units shall have shutters made in 19mm plyboard and finished in laminate of approved shade including top. Laminate to be provided in 1 mm thickness (exterior) and 0.8 mm thick (interior)- no paint. Backply to be in 8 mm plywood. The storage units shall have intermediate shelves as per DB sizes made in 19mm thick plyboard with matching wood lipping. The storage shall have matching wood edge molding as per the detail drawings. This also includes providing necessary hardware like handles, hinges, locks, tower bolts etc of approved make. All exposed wooden surfaces shall be stained to shade. Louvers to be provided in shutter as per the design / instructions of Bank.	40.00	Sqft.		

PRICE BID

c	FILE STORAGE CABINETS: Providing and fixing the 1'-6" deep storage units. The storage units shall have shutters made in 19mm plyboard and finished in laminate of approved shade including top. Laminate to be provided in 1 mm thickness (exterior) and 0.8 mm thick (interior). The storage units shall have intermediate shelves in 19 mm thick plyboard with matching wood lipping. Backply to be in thickness 8 mm or more plywood. The storage shall have matching wood edge molding as per the detail drawings. This also includes providing necessary hardware like handles, hinges, locks, tower bolts etc of approved make. All exposed wooden surfaces shall be stained to shade. All exposed wooden surfaces shall be stained to shade. (same for Over Head storage required above Pantry counter.)	325.00	Sqft.		
d	CHEQUE DROP BOX : (2'-0" x 3ft High X 10" deep) Providing and fixing cheque drop boxes made out of 19mm thk. Commercial plywood grade I finished with 1mm thk. Laminate. Slit should be provided to drop cheques and opening provided with locking arrangement to remove cheques, complete in all respect.	1.00	Nos.		
e	WRITING TABLE: Writing desk made of wood with glass top as per Design Size: 3'0"X1'0" minimum. Writing Ledge to have facility of pigeon holes beneath to place the pay in / payout slips etc.	1.00	nos		
5	FURNITURE [blockboard – make Greenply (ecotec) / Century (sainik) All Tables / counters/ work stations to have 19mm block board top and sides to be with 19 mm comm. ply/board and 1.0 mm laminate finish on exposed surfaces with 0.8 mm thick laminate inside/all the surfaces instead of painting the surfaces / area, drawer units is to be made from 19mm one side plyboard with 1.0 mm laminate finish. The drawers to run on telescopic drawer channels. Drawer units to have two smaller and one bigger drawers and locking arrangement (Godrej or equivalent). Foot-rest 75x50mm 2nd class cedar wood member to be fixed for each table the rate to include all hardware such as drawer channels, SS handles etc. The inside of the table to be provided with 0.8 mm thick laminate (White cream shade). The item also includes a tray for key board running on telescopic channel (ozone/hettich), finished with laminate on top and rounded front size 560x450 readymade CPU trolley with castors etc. complete. (EBCO make)				
	All Tables / counters/ work stations to have 19mm plyboard top and sides to be with 19 mm comm. ply/board and 1.0 mm laminate finish on exposed surfaces with 0.8 mm thick laminate inside/all the surfaces instead of painting the surfaces / area, drawer units is to be made from 19 mm thk. MR Plyboard for the front and rear 12 mm MR Plywood for sides and 8mm thick MR ply for the bottom with 1.0 mm laminate finish. The drawers to run on telescopic drawer channels. Drawer units (approx. size-400x450x680) to have two smaller and one bigger drawers (or storage below one drawer as required by Bank) and locking arrangement (Godrej or equivalent). Foot-rest 75x50mm 2nd class cedarwood member (polished) to be fixed for each table the rate to include all hardware such as drawer channels, SS handles etc. Front modesty with 19mm Comm. block board and 1 mm laminate as per designed in straight / curved shape. The inside of the table to be provided with 0.8 mm thick laminate (White cream shade). The item also includes a tray for key board running on telescopic channel, finished with laminate on top and rounded front size 560x450 readymade CPU trolley with castors etc. complete. (EBCO make)				

PRICE BID

a	Providing and fixing Manager Table as per main specification but finished in 1 mm laminate in two or more colors. The table size to be 1800x750x750 mm. The item also includes Side cupboard for B. Manager with Laminate finish as per the specifications / design by Bank with size 900x450x750.	1	nos		
b	Providing & placing in position BANKING COUNTER TABLE with 750 high x 750MM wide made of 19 mm thk Comm. block board working top front in straight / curved shape and 1.0 mm laminate finish on exposed surfaces with 0.8 mm thick laminate inside/all the surfaces instead of painting the surfaces / area. Counter items also includes Front modesty with 19mm Comm. block board and 1 mm laminate as per designed in curved shape as shown in drg. Drawer units to be as specified in MAIN specifications. BUT with divisions for currency as per BANK's instructions, The drawer units to have AUTOLOOKING system for drawers (Godrej). One footrest per occupant, key board tray 560x450 laminate finish, CPU stand All as per MAIN Specifications for tables, counter is finished with 0.8 mm thick laminate (white/cream) inside the counters & drawer units etc, complete to the satisfaction of Architect/Bank.	25	rft		
c	Providing and placing in position Cash Counter Table made from 19mm Comm. board and with 1mm laminate finish, with overall height of 1050 mm for working counter at 750mm and customer counter at 1050 mm height made with 300mm wide 19 mm comm board finished in 1 mm laminate. Counter items also includes Front modesty with 19mm Comm. block board and 1 mm laminate as per design. The Counter to have drawer units same as mentioned in Main specifications of Tables above except the drawers to have divisions as per Bank's instructions. The counter to have 1 footrest per occupant. Item also includes a key-board tray & C.P.U. stand for EARL Bihari / ebco make. The inside of the table to be 0.8 mm thick laminate (white/cream) complete to the satisfaction of Architect/Bank.	5	rft		
d	SERVER ROOM TABLE (Size - 1200 x 700 x 750): All as per MAIN Specifications for tables / counter without drawers complete to the satisfaction of Architect/Bank. No Storage drawer is to be provided.	1	Nos		
				Total=	

PRICE BID

BOQ SPECIFICATIONS OF ELECTRIFICATION AND ALLIED WORKS PART-II

S.NO		ITEM AND SPECIFICATION	QTY	UNIT	RATE	AMOUNT
		<u>(A)ELECTRICAL WORKS</u>				
-	-	-				
		<u>ELECTRICAL</u>				
		<u>SUBHEAD 1 (POINT WIRING)</u>				
		The rates for the point wiring shall include providing and fixing of following:				
a.		Wiring of the point of any length from distribution board to point outlet including circuit wiring (i.e from DB to Switchboard)				
b.		Earthing of all switch box and all outlet boxes fitting, fans, 3rd pin of plug with 1.50mm copper wire.				
c.		Modular Switch/ Sockets of Standard make with necessary modular series cover plate and MS Boxes				
d.		Embedding all conduits in walls laying in slabs, above false ceiling or in floors including all accessories as required, cutting and refilling the chases with cement mortar.				
e		Providing, fixing Modular switches, sockets, M.S. boxes (1.6mm thick) draw boxes, G.I. Pull wires (where required), brass screws, ceiling rose/connector etc.				
f		Adopting separate and independent system of wiring for lighting, power (normal and essential supply). Wiring for following points using PVC insulated copper conductor wires of 650V/1100V grade in MMS grade-PVC conduit concealed/ exposed including switches & sockets as above.				
		LIGHT :(Maximum three points to be looped from primary)				
		POWER:(Maximum TWO points in one circuit)				
		INTERNAL WIRING				
1		<u>POINT WIRING :</u>				
		Providing wiring (supply, fixing, testing and comm. etc) for light point / Exhaust fan point / Call bell point/6A Switch-socket point etc with 2x1.5+1X1.5 sq mm FRLS PVC insulated copper conductor single core multi stranded wire in MMS grade-PVC conduit with conduit accessories like bend , junction box etc in concealed/surface manner as per site requirement with suitable Modular Switches with plate and metal / PVC box, ceiling rose , bulb holder etc including 1.5 sqmm PVC insulated copper earth wire etc complete as required. Wire colors : Red, Black, Green .Supplying, providing wiring (supply, fixing, testing and comm. etc) for circuit with 2 x 2.5 + 1 x 2.5 sq mm FRLS PVC insulated copper				

PRICE BID

		conductor single core multi stranded wire in MMS grade-PVC conduit with conduit accessories like bend, junction box etc on surface / recessed manner etc (Wiring from D.B. / Source to Board/destination) and making good all the damages, painting, cleaning the site etc complete as required as per site requirement and as directed				
	a.	Providing and fixing Primary light point (1light from 1 switch)	30	Nos.		
	b.	Providing and fixing Secondray light point(Maximum three points to be looped from primary i.e. maximum 3 lights from 1 switch)	25	Nos.		
	c.	Plug point /ceiling Rose Point (for wall fans/Exhaust fan) Supply, fixing and commissioning of 1 No 6A multi Socket with 1 No. 6A switch (Modular type) with cover plate, sheet steel box / PVC modular box etc on surface / concealed manner l/c electrical connections and making good all the damages, painting, cleaning the site etc. complete as required as per site requirement and as directed.	20	Nos.		
	d	P&F bell point i/c of buzzer	1	Nos.		
	e	6 AMP. POINTS ON SAME BOARD(Half point) :				
		Supply, fixing, testing and commissioning of 1 No 6 A Multi Socket with 1No. 6 A switch (Modular type) with cover plate , sheet steel box / PVC modular box etc on surface / concealed manner l/c electrical connections and making good all the damages, painting, cleaning the site etc complete as required as per site requirement and as directed.	6	Nos.		
	f	Ceiling fan point (rate should include electronic fan speed regulator)	2	Nos.		
	g	Providing and fixing primary point for outside signboard / signage.	1	Nos.		
2		16 AMP. POWER POINTS:(including circuit wiring)				
		Supply, fixing, testing and commissioning of 1 No 16 A switch & 1 No. six pin 6/16 Amp. Multi Socket (Modular Type) with cover plate , sheet steel box etc on surface / concealed manner l/c electrical wiring with 2 4sqmm + 1 X 4sqmm FRLS PVC insulated copper conductor single core multi stranded wire in MMS grade-PVC conduit with conduit accessories like bend, junction box etc on surface / recessed manner etc (Wiring from D.B. / Source to Board to destination) and making good all the damages, painting, cleaning the site etc complete as required as per site requirement and as directed.	9	Nos.		

PRICE BID

3		AC POINTS :				
		Supply, Installation, Testing and commissioning of the surface / recess mounting distribution board with 20 A Metal plug and socket, with 20 A/25A/32A SP MCB Incl. wiring with 2 X 4.0 sq mm + 1 X 4 sqmm PVC insulated copper conductor single core multi stranded wire in MMS grade-PVC conduit with conduit accessories like bend, junction box etc on surface / recessed manner etc (Wiring from D.B. / Source to Board/destination) and making good all the damages, painting, cleaning the site etc complete as required as per site requirement and as directed.(MCB of C-Curve with S.C Capacity 10 kA)	9	Nos.		
		<u>PANELS AND D.B.'s</u>				
4	(A)	<u>MAIN PANEL/VTPN(4 WAY) :(With following minimum capacity)</u>				
		Supply, installation , testing and commissioning of totally enclosed compartmentalized dust and vermin proof cubical segregated and modular in construction M.V. panel board wall mounted fabricated with 14swg and 16swg of CRCAM.S.sheet duly painted with two coat of metal red oxide and two coat of fire resistance paint at inside and out side of the panel, bus-bar chamber ,outgoing switchgear etc (all feeder unit Would be compartmentalized), color coded PVC sleeved vertical / horizontal busbar of required size of length, (bus-bar distances shall be minimum 32 mm) insulators, hardware, neoprene gasket , hinged door, interconnecting single core multi strand lugged copper wire having current density of 2A / sqmm of suitable capacity & size with lugs from busbar to switchgears / mccb / mcb or where ever required, two earthing terminal busbar of size 25 x 5 mm with nut & bolts at out side of the panel , rating and name plates for all incoming & outgoing , two eye two nos eye bolts,wire mesh jali for ventilation etc comprising with the followings.				
		NOTE:-				
		Sheet 16 swg : panel sides,upper,lower,and Ft.doors				
		Sheet 16 swg : back side and compartments.				
		Glandplates : 3 mm thick.				
		Cable entry : Provision at bottom and upper sides.				
		Inside the panel : white colour paint.				
		Outside the panel : Grey colourpaint.or as directed.				
		INCOMER				

PRICE BID

		1 Nos 160 Amp MCCB, 25 KA- 4 Pole,C-curve				
		1 Nos – 200 A TPN insulated Copper Bus Bar				
		Set of Indicator Lamps				
		Set of Voltmeter + Ammeter+ Selector Switch				
		OUTGOINGS				
		4Nos- 63 Amp DP,2 Nos-63 A TPMCB,C-curve				
		SET AS ABOVE	1	Nos		
	B	SFU TPN 160 A with HRC fuses(just after meter and prior to Main Panel)	1	Nos		
5		<u>LIGHT DISTRIBUTION BOARD</u>				
		Supply, Installation, Testing and commissioning of the surface / recess mounting following way TPN MCB three phase distribution board for single phase outgoing with IP 42 protection , direct on wall incl. the followings accessories				
		INCOMER				
		1 No. TPN-RCBO/ELMCB 63 Amp ,100 ma sensitivity				
		OUTGOINGS				
		12Nos SPMCB 6/10/16 Amp,B-Curve				
		SET AS ABOVE	1	Nos		
		incl. Electrical connection ,earthing, making good all the damages, painting, cleaning the site, etc complete as per site requirement and as directed.				
6		<u>AC DISTRIBUTION BOARD</u>				
		Supply, Installation, Testing and commissioning of the surface / recess mounting following way MCB three phase distribution board for single phase outgoing with IP 42 protection , direct on wall incl. the followings accessories				
		INCOMER				
		1 No. TPMCB 63Amp ,C-curve				
		OUTGOINGS				
		10 Nos SPMCB 25/32 Amp,C-curve				
		SET AS ABOVE	1	Nos		
		incl. Electrical connection ,earthing, making good all the damages, painting, cleaning the site, etc complete as per site requirement and as directed.				
7		<u>ATM DISTRIBUTION BOARD (existing DB to be used)</u>				
		ATM PANEL/DB WORKS- Removal, Lifting, Shifting, transportation including labor & Installation/fixing of existing electrical ATM MCCBs, DBs, UPS-battery set and other accessories: Disconnecting existing live	1	LS		

PRICE BID

		cables/wires,DB,panels,UPS battery sets, shifting to other specified location and making live all connections complete in all respect. (shifting within branch premises).				
		incl. Electrical connection ,earthing, making good all the damages, painting, cleaning the site, etc complete as per site requirement and as directed.				
		<u>SUBHEAD IV : UPS WIRING</u>				
8		U.P.S. DISTRIBUTION BOARD (INCOMER)				
		Supply, Installation, Testing and commissioning of the surface / recess mounting following way Double door MCB D.B.- Single phase distribution board (Consumer unit) for single phase out going with IP 42 protection incl. the followings accessories – incl. Electrical connection ,earthing, making good all the damages, painting, cleaning the site, etc complete as per site requirement and as directed.				
	a.	INCOMER				
		1 NO 63 A DP MCB				
		OUTGOINGS				
		2 Nos- 63Amp DP MCB				
		SET AS ABOVE	1	Nos		
	b	<u>UPS DIST. BOARD OUTGOINGS.</u>				
		1 NOS 12 WAY SPN DIST BOARD				
		1 Nos- 63 Amp DPMCB				
		10 NOS 10/16 AMP SPMCB				
		SET AS ABOVE	1	Nos		
9		<i>SPECIAL POINTS: (UPS) any length(TO WORKSTATIONS)(Maximum TWO points in one circuit)</i>				
		Supply, fixing, testing and commissioning of following Modular type switch socket with cover plate , sheet steel box etc on surface / concealed manner I/c electrical wiring with 2 X 2.5 sq mm + 1 X 2.5 sq mm FRLS PVC insulated copper conductor single core multi stranded wire in rigid MMS grade PVC conduit with conduit accessories like bend, junction box etc on surface / recessed manner etc (Wiring from D.B. / Source to Board/destination) and making good all the damages, painting, cleaning the site etc complete as required as per site requirement and as directed.				
		1 Nos. 16 A Switch + 3 Nos. 6 A, 5 pin Socket.	12	Nos.		

PRICE BID

10		<u>EARTHING</u>				
		Copper Chemical Earthing - Supply, Installation, Connection, Testing and Commissioning of maintenance free heavy duty pure electrolytic copper chemical earthing electrode of 50 mm dia., wall thickness 14 gauge and 3 meter length (as per site conditions) with internal strip of copper (25x6)mm along with 60 kg bag of Back fill compound (highly conductive, non-corrosive moisture retaining chemical) complete with excavation , civil works including top 300 mm deep one brick thick masonry chamber & good quality soil, water pouring arrangements with cast iron cover and with arrangements for fitting/termination of G.I. flats/wire with G.I. nut bolts. The voltage between Neutral and earth not to exceed 0 Volts and IR value less than 1 ohm. The earth resistance shall be as per IS 3043.	1	set		
11		Supply and laying of 6.0 sqmm PVC insulated copper wire from earth station to main panel board and to other interconnections in 20 mm GI Pipe including all materials, accessories etc complete.	30	Mtrs.		
		<u>CABLING :</u>				
12		<u>L.T.CABLES :</u>				
		Supply,laying ,testing and commissioning of the following 1100 volt grade pvc insulated Al / Cu. Conductor armored cable inner and outer sheathed , along with the two run of G.I.earth wire i/c termination with brass gland and Al. lugs etc. complete as required.				
		On surface :				
		S/Fixing the cable on wall / column / beam / ceiling / above false ceiling / existing trench etc incl. s/f of of saddles / spacers (wherever required as per site conditions) and two run of G.I. earth wire along with the cable. Making good all the damages				
	a	4 C x 25.0 sqmm armored copper cable with 10 SWG 2 Nos G.I. wire for Electric room /Ups room	10	Mtrs.		
	b	4 C x 16.0 sqmm armored copper cable with 10 SWG 2 Nos G.I. wire for Electric room /Ups room	35	Mtrs.		
	c	2 C x 10.0 sqmm armored copper cable with 10 SWG 2 Nos G.I. wire for Electric room /Ups room	25	Mtrs.		
		TELEPHONE WIRING / CABLING SYSTEM.				
		<u>TELEPHONE POINT :</u>				
13		Supplying, Installation, testing and commissioning of the telephone point with the followings -				

PRICE BID

	a.	Two pair, 0.61 mm dia. telephone cable tinned copper conductor, P.V.C. insulated and sheathed, fire retarding, anti-termite, color coded twisted pairs and rip cord. (brand - polycab/RR kabel)				
	b	HMS Pvc pipe on beam /column / wall / floor. etc with all necessary materials i/c connections, identification by numbering etc complete as required as per I.T.D. specification.				
	c.	Double outlet with shutter modular type Telephone Outlets (RJ – 11) with suitable size PVC modular boxes complete as required .	1	Nos.		
	d	Single outlet with shutter modular type Telephone Outlets (RJ – 11) with suitable size PVC modular boxes complete as required .	6	Nos.		
14	a	Providing and fixing 30pair KRONE make telephone tag block with 20 pair module with termination and crimping complete and making good the surface as required/ directed.	1	Nos.		
	b	Providing and fixing 20 pair armoured tinned copper telephone cable in 32 mm PVC conduit as per the Bank's directions from telephone utility junction box - (FOR LEASE LINE etc.)	15	Mtr		

(B)DATA CABELING WORKS

S.NO		ITEM AND SPECIFICATION	QTY	UNIT	RATE	AMOUNT
		COMPUTER CABLING SYSTEM.				
		COMPUTER POINT : I / O's :				
1	I	Supplying, Installation, testing and commissioning of the Computer point (brand - D-Link) with the followings -				
	a.	Four pair CAT 6 LAN cable tinned copper conductor, P.V.C. insulated and sheathed, fire retarding, anti termite, color coded twisted pairs and rip cord. (from server room switch to I/O outlet) (brand-D-link)				
	b	HMS Pvc Pipe on beam /column / wall / floor etc with all necessary materials i/c connections, identification by numbering etc complete as required as per At & T specification.				
	c.	Single outlet with shutter modular type I / O's Outlets (RJ – 45) with suitable size PVC modular boxes complete as required	12	Nos.		

PRICE BID

<u>SPECIFICATIONS FOR ELECTRICAL FITTINGS</u>						
S.NO		ITEM AND SPECIFICATION	QTY	UNIT	RATE	AMOUNT
(C)ELECTRICAL FITTINGS/FIXTURES						
1		Supply, fixing, testing and commissioning of Recess mounted decorative luminaire with LED FIXTURES with class I electrical safety, complete as required Fitting Dimensions :				
	a	32-40 watts, Minimum 2800 lumens LED SQUARE size 600X600X80 mm (Approx.) : CRI>80,PF>0.9 (Philips / wipro)	30	Nos.		
	b	14-15 w ,Minimum 850 lumens LED ROUND DOWN LIGHTER Diameter 110-165mm,CRI>80,PF>0.9(Philips / wipro)	6	Nos.		
	c	1 x 20 w LED Tubelight with all accessories(Philips / wipro)	12	Nos.		
	d	CEILING FAN				
		Supply and fixing of CEILING FAN 1200 MM Sweep	2	Nos.		
TOTAL OF ELECTRICAL AND ALLIED WORKS						

Discription	Total Cost (in Rs.)
Civil &Interior Works	
Electricals & Allied Works	
Total Amount	
Total In Words:	

Above rates and amounts are excluding GST and GST as applicable shall be charged extra.

Approved List of Materials (Brands/Make) for the Renovation Works & Site layout (tentative)

Sr. no.	Item	Recommended
1	False Ceiling- Gypsum Board	Gypsum India Ltd ,saint gobain,Laffarge
2	False Ceiling Tiles	Armstrong, AMF ,Gypsum India Ltd
3	Aluminum Sections-Partition/Window	AjitIndia,Jindal,Indal, Hindalco
4	Aluminum Sections-Door	AjitIndia,Jindal,Indal, Hindalco

PRICE BID

5	Aluminum Grill	Jindal,Nalco,Hindalco
6	MDF,Particle Board	Greenlam, Century,
7	Plywood, Block Board (MR Grade)	Century, Greenply
8	Block Board(MR Grade)	Century, Greenply,
9	Laminates	Greenlam, Merino, Century
10	Wood	Well seasoned white cedar wood as per approval
11	Moulding & Lipping	Well seasoned white cedar wood as per approval
12	Wood Preservative	Asian, Nerolac,Woodguard,British
13	Adhesive	Fevicol,Araldite,Mowicol,Mahacol
14	Glass	Modi,Saintgobain,Ashai
15	Lock,Night Latches	Godrej,4-C ACME,Ultra,Dorset
16	Hydraulic Door closer	Yale,Garnish, Everite, Hyper
17	Floor Spring (Double action 100 kg. - 150 kg)	Ozone, Dorset, Dorma
18	Drawer Channel, Slider (Telescopic)	,Ebco, Hettich, Godrej
19	Key Board Drawer,Tray	,Ebco,Hettich, Godrej / wooden as per Bank's approval
20	Hard ware	All the necessary hardware shall be of ISI marked with best quality/ and as per Bank's approval.
21	Teak wood	Beading and Moulding to be of first quality teak wood.
22	Paint	Asian,Berger,Nerolac
23	Flooring / Dado (Vitrified/Ceramic)	Nitco,Jhonson,Kajaria
24	Roller ,Venetian Blinds	Vista,MAC,Univesal

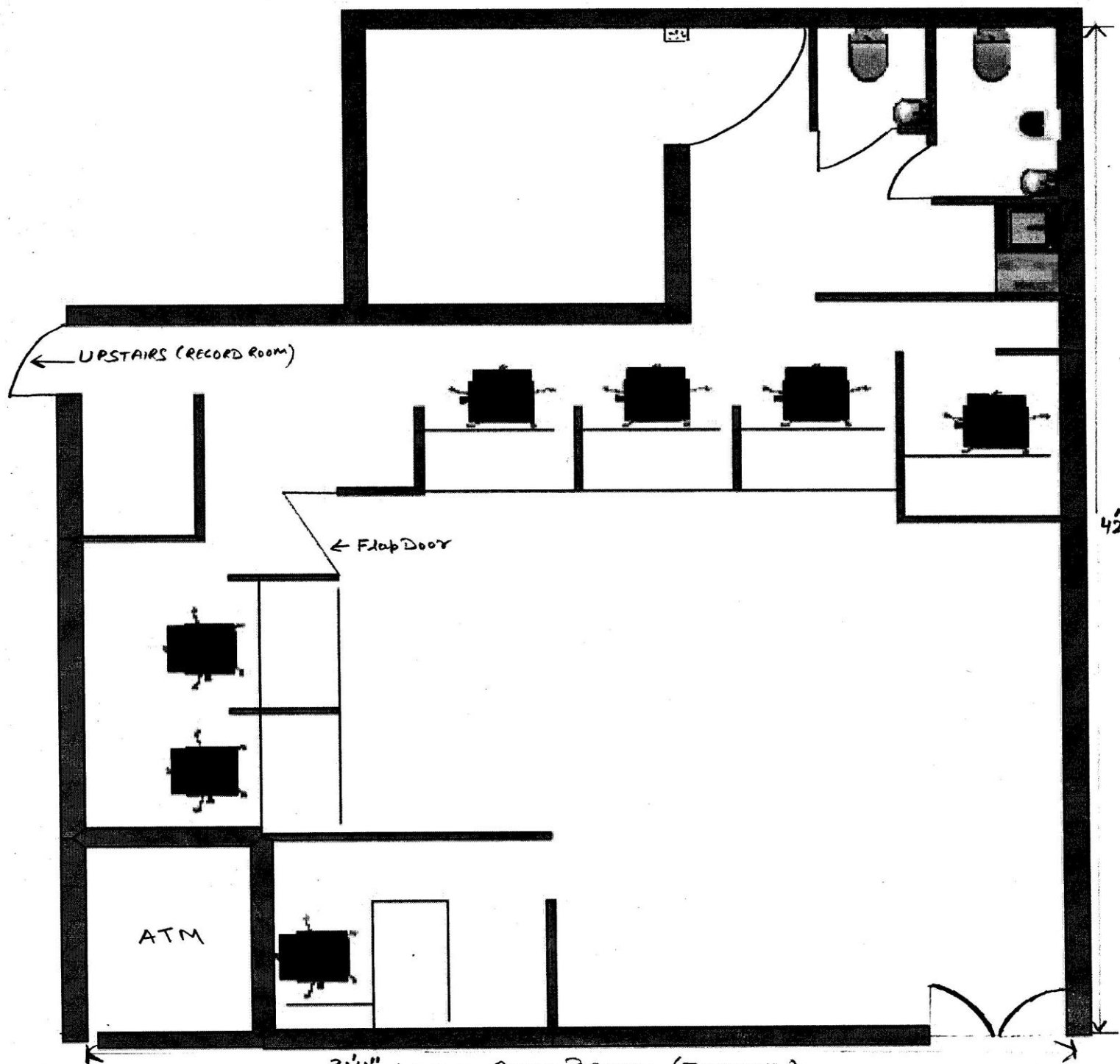
PRICE BID

25	Rubber, Polyurethane ,Tapestry,Leather Foam	Modi rubber foam, U foam (polyurethan),MM
26	Wash Basin	Hindware,Cera,Johnson,Parryware
27	WC (EWC,Orissa Pan)	Hindware,Cera,Johnson,Parryware
28	GI Pipes	"C"- Class GI pipes, for all the diameters, Jindal, Tata,Zenith
29	Tap & Flush cock	Jaquar,
30	Sink	Nirali,Diamond
31	Cement	ACC,Ambuja,Birla,Binani
32	Steel	Hot rolled deformed bars confirming to IS:1139-1966 (Fe-415 HYSD) TATA, Jindal, SAIL, RINL
33	Aggregates	Aggregates shall comply with the requirements of IS:383-1970
34	Brick Works	All brick work shall confirm to IS:2212-1962
35	Reinforcement Bending and Fixing Works	Bending and fixing of bars for concrete works shall be as per IS:2502-2010
36	RCC,PCC Works	All RCC/PCC works shall confirm to IS:456-2000
37	Aluminum Composite Panel	Alstone,Alucobond,Eurobond
38	Flush Doors (hot pressed)	Merino, Green, Century
Electrical fittings & fixture		
1	MCCBs, MCBs, ELCBS, RCCBs, DB, ICTPN, TP, HRC fuse, Change over switch, Switch Fuse Unit	L&T,ABB,Legrand,Schneider
2	FRLS insulated Elect. Wires/Cables Armoured/Unarmoured, Sheathed, unsheathed, Flexible LT cable, Multi core,single core Cable, Flat cable ,Speaker cabling, telephone	Polycab, RR KABEL

PRICE BID

3	Rotary Switches. Selector Switches	L&T, GE, ABB, Siemens
4	Exhaust fan ,Pedestal fans,Ceiling fan, Wall fan	Crompton,Bajaj,Havells
5	Electronic Energy Meter	L&T,ABB,Havells
6	Electrical accessories Modular -switch, Plugs sockets, ceiling rose, Angle holder, holders	Anchor,Crabtree,ABB,MK
7	Bell Buzzer	Anchor, Leader
8	Electronic fan regulator	Anchor,MK,Crabtree,Legrand
9	Lights	Philips/wipro
10	Data cable, I/O, connectors etc.	D-link
11	Distribution boxes	L&T,ABB,Legrand,Schneider
12	PVC Conduit pipe & Casing -capping for electrical wiring	ISI mark, thickness (2 mm or more)

PRICE BID



31'4" LAYOUT OKHLA BRANCH (TENTATIVE)

(SUBJECT TO CHANGE / MODIFICATION AS PER BANK DISCRETION)

DIMENSIONS ARE APPROX. CONTRACTORS TO VERIFY THE SAME THEMSELVES AT SITE.